

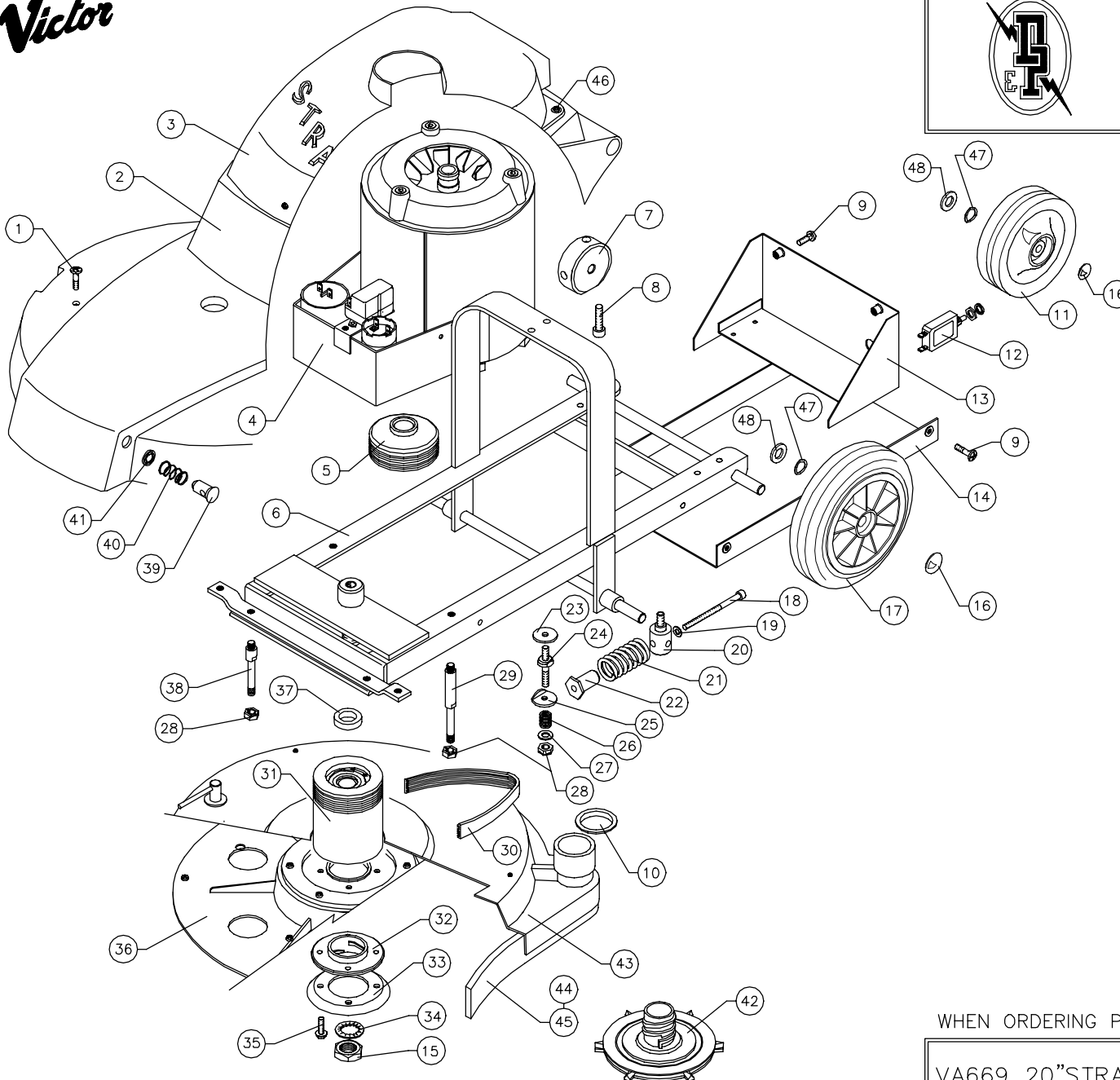
Victor



DOWDING & PLUMMER Ltd.

CALTHORPE HOUSE, STOCKFIELD ROAD,
BIRMINGHAM B27 6AP – ENGLAND

TEL: 0121-706-5771 FAX: 0121-708-1052



ITEM	PART No.	QTY.	DESCRIPTION
1	M8X20BPP	2	M8 x 20 PANHEAD – BLACK
2	C1345	1	20" STRATUS BODY MOULDING
3	C1339	1	20" STRATUS TOP COVER
4	AYM2174	1	INDUCTION MOTOR ASSEMBLY
5	C1341	1	MOTOR PULLEY ø80mm x J12
6	C1388	1	20" STRATUS FRAME
7	A1801	1	SELECTOR GEAR
8	M8X25SC	2	SOCKET SET SCREW M8x25
9	M6X20BPP	6	M6x20 PANHEAD SCREW – BLACK
10	A1926	1	PLASTIC CAP
11	A1880/BL	2	WHEEL ø125 – BLACK
12	SBI5499	1	CIRCUIT BREAKER 10 AMP
13	C1344	1	METAL ENCLOSURE
14	A2267	1	BELT GUARD
15	M20NH	1	M20 HALF NUT
16	SBI3005/A	4	SPRING CAP 1/2"
17	C1587	2	WHEEL ø175 REINFORCED-BLACK
18	M6X125SC	1	M6 x 125 SOCKET CAP BOLT
19	M6N	1	M6 PLAIN WASHER
20	A2064	1	MOTOR PILLAR STUD
21	A1850	1	SPRING ø30 x 50
22	A1865	1	SPRING RETAINER
23	A1378	4	PLAIN WASHER ø30xø9x2.5
24	A2068	3	MOTOR STUD
25	A2069	3	FOLDED WASHER
26	A2132	3	SPRING ø14 x 15
27	M8N	4	WASHER M8 PLAIN
28	M8NSB	8	M8 NUT – BINX
29	C1034	2	SKIRT HANGER BOLT REAR – 40mm
30	SBI6143	1	DRIVE BELT – 430/J8
31	AYP1033	1	DRIVE PULLEY ASSY – ø80x97mm
32	B1164	1	RETAINER NUT
33	A1882	1	REINFORCING RING
34	M20WSH	1	M20 HALF NUT & SP WASHER
35	M6X20PPTT	4	M6 x 20 TAPTITE SCREW
36	AYD1007	1	EXCEL 16" DRIVE PLATE ASSY
37	A2062	1	PULLEY SPACER
38	C1035	2	SKIRT HANGER BOLT FRONT – 15mm
39	A1945	2	ANCHOR PIN (15mm) PLASTIC
40	A1620	2	SPRING ø17 x 25
41	A1944	2	FIXING WASHER – ø10mm
42	AYK1004	1	PAD RETAINER ASSY
43	AYD1013	1	20" DUST SHIELD
44	A1897	2000mm	FELT FLOOR SEAL
45	A1927	2000mm	DIFFUSER SEAL STRIP
46	SBI6039	3	6mm SCRIVITS
47	SBI3666	4	WAVEY WASHER – PLW4
48	M12W	4	12mm PLAIN WASHER

WHEN ORDERING PLEASE QUOTE PART No. AND PART DESCRIPTION

VA669 20"STRATUS BURNISHER 1500RPM 220/240V 50Hz

FROM 12.01.98 TO