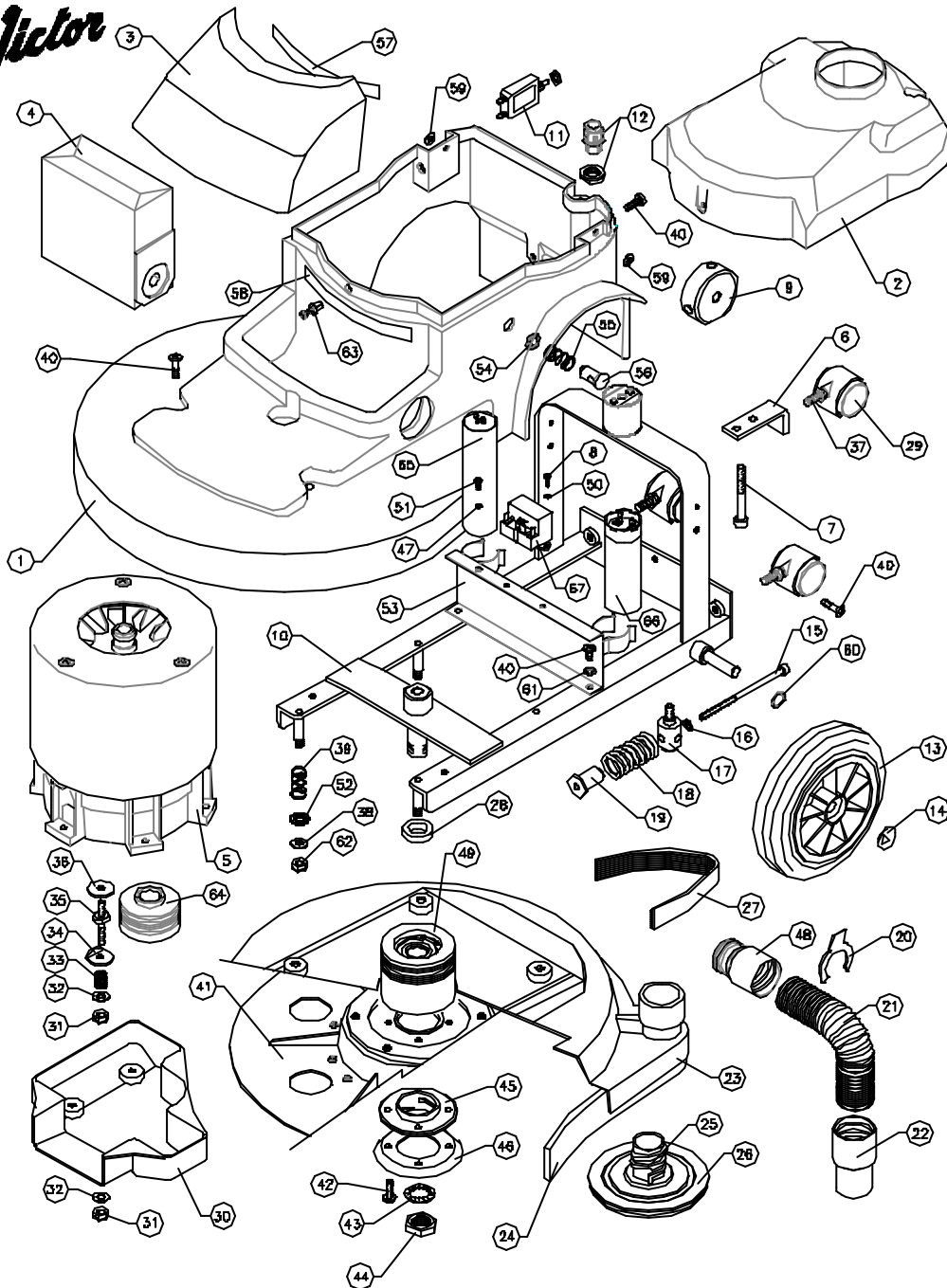


Victor



DOWDING & PLUMMER Ltd.

CALTHORPE HOUSE, STOCKFIELD ROAD,
BIRMINGHAM B27 6AP - ENGLAND
TEL: 0121-706-5771 FAX: 0121-708-1052



ITEM	PART No.	QTY.	DESCRIPTION	ITEM	PART No.	QTY.	DESCRIPTION
1	C1725/C	1	BODY MouldING	59	M6W	2	M6 x 14 O/D PLAIN WASHER
2	C1726	1	TOP MOTOR COVER	60	SB3606	2	WAVEY WASHER - PLW4
3	C1367	1	FRONT DUST BAG COVER	61	M6WSH	2	M6 SHAKEPROOF WASHER
4	C1456	1	DUST BAG	62	M6NSB	4	M6 NUT - BINX
5	SEE TABLE	1	MOTOR ASSY.	63	SB6039	1	SCRIVET
6	C1801	1	BACK BRACKET	64	C1724	1	MOTOR PULLEY #65 J8
7	N8X70SC	2	SOCKET SCREW M8x70mm	65	SB6056	1	30NF4 RUN CAPACITOR
8	N3X16SP	2	N3X16 POZIPAN HEAD SCREW	66	SB6228	1	125MF5 START CAPACITOR
9	C1398	1	SELECTOR PIVOT	67	SB3958	1	2CR4-258 START RELAY
10	C1702	1	WELDED FRAME				
11	SB5500	1	CIRCUIT BREAKER 12AMP.				
12	SB5833	1	CABLE CLAMP M16				
13	SB6101/NT	2	WHEEL #200 REINFORCED-BLACK				
14	SB3005/A	2	SPRING CAP 1/2"				
15	N6X125SC	1	SOCKET CAP SCREW M6 x 125mm				
16	I1-4X3-4W	1	1/4" I/D x 3/4" O/D WASHER				
17	A2084	1	MOTOR PILLAR STUD				
18	A1860	1	SPRING #30 x 50				
19	A1865	1	SPRING RETAINER				
20	C1391	1	HOSE CLIP				
21	SB6136/F	1	STRETCH HOSE				
22	SB5668	1	HOSE END 32mm - BLACK				
23	C1519	1	SKIRT ASSY.				
24	DA004/A	1	DIFFUSER FLOOR SEAL				
25	B1183	1	PAD RETAINER				
26	A1842	1	POLYETHYLENE WASHER				
27	C1728	1	DRIVE BELT 300 J8				
28	A2082	1	PULLEY SPACER				
29	SB6029	3	#40 TWIN PLASTIC WHEEL CASTOR				
30	C1398	1	DRIVE BELT GUARD				
31	M6NSB	6	M6 NUT - BINX				
32	N6W	7	M6 PLAIN WASHER				
33	A2132	3	SPRING #14 x 15				
34	A2060	3	FOLDED WASHER				
35	A2088	3	MOTOR STUD				
36	A1378	4	PLAIN WASHER #30x#6x2.5				
37	SB6537	3	M6 x 15 CASTOR STEM				
38	N6W	4	M6 PLAIN WASHER				
39	A1628	4	SPRING #17 x 23				
40	N6X10SP	7	M6 x 10 SCREW - POZIPAN				
41	AYD1016	1	15" DRIVE PLATE ASSY.				
42	N6X20PPTT	4	M6 x 20 SCREW - TAPTITE				
43	M2DWSP	1	M2D SPRING WASHER				
44	M2DNH	1	M2D HALF NUT				
45	B1184	1	RETAINER NUT				
46	A1882	1	REINFORCING RING				
47	N4WB	1	N4 PLAIN WASHER BRASS				
48	B1367/BL	1	SWIVEL END INNER - BLACK				
49	AYP1036	1	#80mm x 75mm DRIVE PULLEY ASSY.				
50	M3WSP	2	M3 SPRING WASHER				
51	N4X10SPB	1	N4X10 POZIPAN HEAD SCREW BRASS				
52	N12W	4	N12 PLAIN WASHER				
53	C1703	1	CAPACITOR MOUNTING BRACKET				
54	A1944	1	FIXING WASHER - #10mm				
55	A1820	1	SPRING #17 x 25				
56	A1946	1	ANCHOR PIN (10mm) PLASTIC				
57	SB6326	1	HOOK STRIP				
58	SB6327	1	LOOP STRIP				

MODEL	DESCRIPTION	HANDLE ASSY	MOTOR ASSY
VA531/C	240V/50HZ/1150W	AYH1209	AYM2185
VA531021A/C	220V/50HZ/1150W	AYH1209	AYM2180
VA531022A/C	220V/50HZ/1150W VDE	AYH1290	AYM2190
VA531FULTON/C	220V/50HZ/1150W	AYH1209	AYM2190

WHEN ORDERING PLEASE QUOTE PART No. AND PART DESCRIPTION

VA531/C LYNX 15" DRIVE ASSY 220/240V RANGE