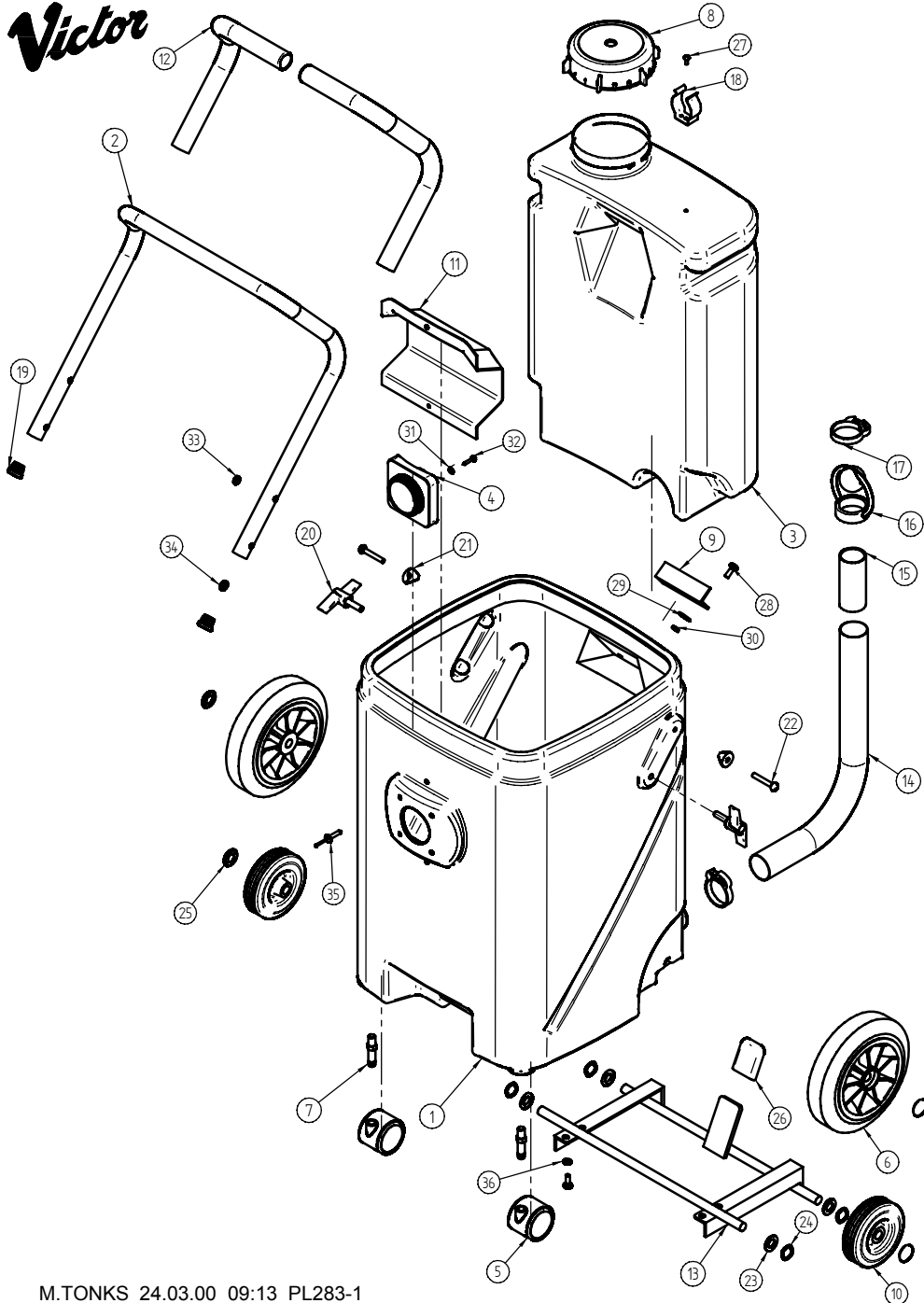


**Victor**



# DOWDING & PLUMMER Ltd.

CALTHORPE HOUSE, STOCKFIELD ROAD,  
BIRMINGHAM B27 6AP - ENGLAND  
TEL: 0121-706-5771 FAX: 0121-708-1052

Item Number	Document Number	Title	Quantity	Item Number	Document Number	Title	Quantity
1	D0052	35L. MAIN TANK	1	35	SBI6441	5DIA x 25 EXPANSION RIVET	2
2	C1606	MAIN HANDLE	1	36	M6WSH	M6 SHAKEPROOF WASHER	4
3	D0033	20L. TANK	1				
4	C1805	TUB INTAKE RADIUS	1				
5	SBI6400	CASTOR	2				
6	SBI6100/NT	WHEEL-180mm	2				
7	SBI6399	CASTOR STUD	2				
8	D0116	SCREW CAP	1				
9	D0050	SUPPORT BRACKET	1				
10	D0112	WHEEL-100mm	2				
11	C1592	INLET DEFLECTOR	1				
12	C1607	HANDLE GRIP	2				
13	D0049	AXLE FRAME	1				
14	D0143	FLAT LAY DUMP HOSE	1				
15	D0055	DUMP VALVE TUBE	1				
16	SBI6564	RUBBER BALL VALVE	1				
17	SBI6586	HERBIE CLIP	2				
18	SBI6384	SPRING CLIP 35mm DIA	1				
19	SBI6395	TUBE END PLUG	2				
20	SBI6473	HANDLE ADJUST KNOB	2				
21	SBI6433	SADDLE WASHER	2				
22	M6X40PPB	M6x40 POZIPAN SCREW BLACK	2				
23	M12W	M12 PLAIN WASHER	4				
24	SBI3666	WAVEY WASHER - PLW4	4				
25	SBI3005/A	12mm STARLOCK CAP	4				
26	SBI6590	FRAME COVER	1				
27	M4X10PP	M4x10 POZIPAN SCREW	1				
28	M6X16PP	M6x16 POZIPAN SCREW	6				
29	I1-4X3-4W	1/4"x3/4" PLAIN WASHER	2				
30	M6N	M6 NUT	2				
31	M4W	M4 PLAIN WASHER	4				
32	M4X20SP	M4x20 PH SCREW SPAX	4				
33	M6WB	M6 PLAIN WASHER BLACK	2				
34	M8NUT	M8 NYLOC NUT	2				

WHEN ORDERING PLEASE QUOTE PART No. AND PART DESCRIPTION

## CX20 35L & 20L TANK ASSEMBLY