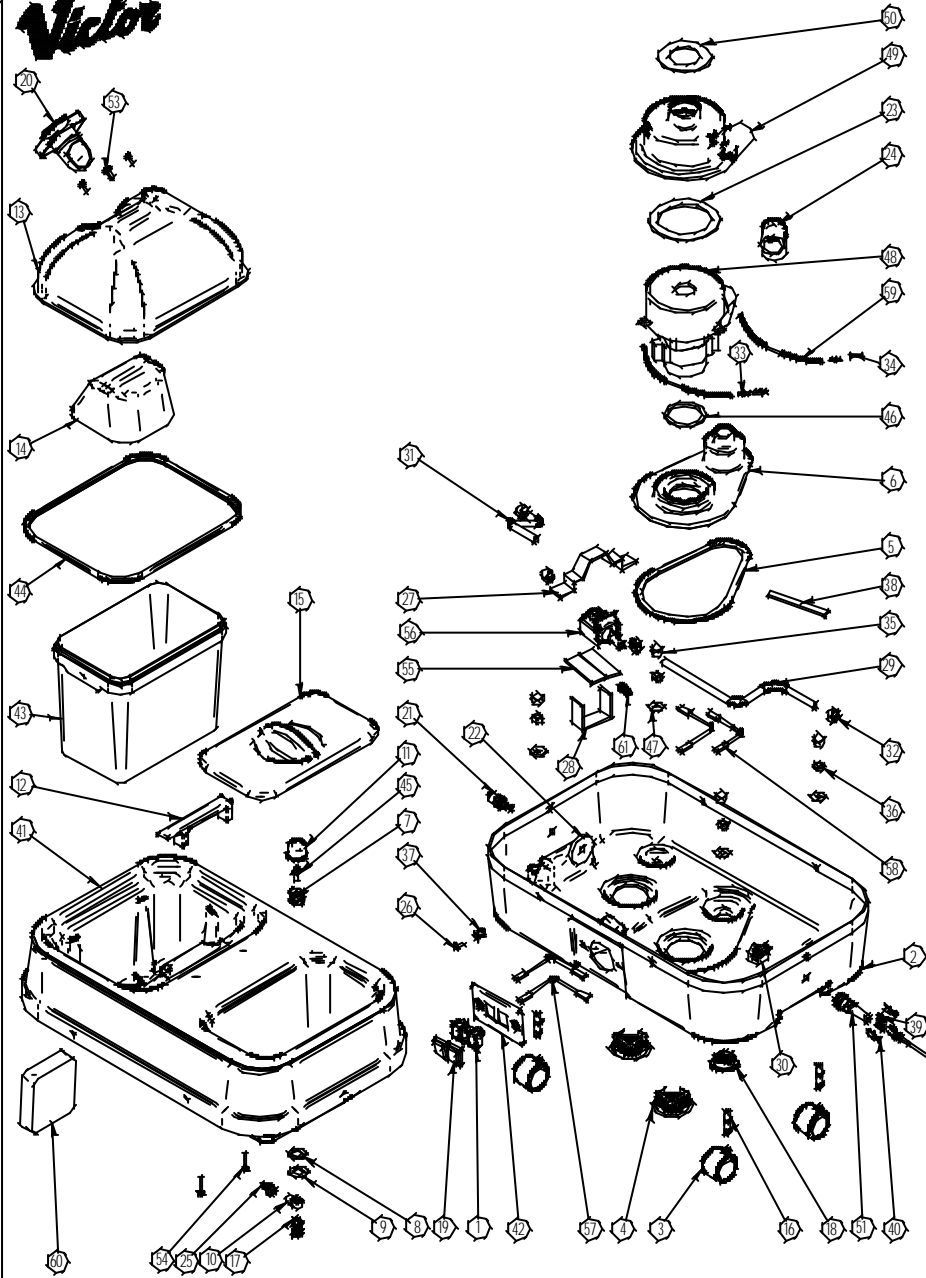


Victor



A.BARTON 10.09.02 16.50 PL289-6



DOWDING & PLUMMER Ltd.

CALTHORPE HOUSE, STOCKFIELD ROAD,
BIRMINGHAM B27 6AP - ENGLAND

TEL: 0121-706-5771 FAX: 0121-708-1052

Item Number	Document Number	Title	Quantity	Item Number	Document Number	Title	Quantity
1	C1715	SWITCH 4 CONNECTOR	2	32	SBI3976	HOSE CLIP	4
2	D0061	BOTTOM CASING	1	33	SBI3315	6.3mm FEMALETAG	2
3	SBI6612	CASTOR	4	34	SBI5932	6.3mm POST FIT BOOT	2
4	SBI6391	LARGE VENT	2	35	SBI6613	NUT PROTECTION CAP	4
5	D0168A	FOAM STRIP	1	36	M10N	CASTOR NUT	4
6	D0067	INLET/EXHAUST FLANGE	1	37	SBI6404	M6 SHORT JACKNUT	8
7	SBI6637	BAULKHEAD FITTING AND NUT	1	38	D0168B	FOAM STRIP	1
8	D0149	RUBBER GASKET	1	39	SBI3726	6.3mm PIGGY BACKTAG	2
9	M20W	M20 WASHER	1	40	SBI3316	6.3mm PRE FIT MALE BOOT	2
10	SBI6638	FEMALE BANJO BODY	1	41	D0160	UPPER CASING AND BUCKET ASSY	1
11	SBI6814	MICRO MESH FILTER ST SF	1	42	D0107	SWITCH PLATE	1
12	B1356	COVER HANDLE	1	43	SBI6617	10LTR BUCKET	1
13	D0068	INLET DOME	1	44	D0166A	CLEAR DOME SEAL	1
14	D0069	INLET DIFFUSER	1	45	D0075	FILTER ADAPTOR	1
15	D0070	CLEAN WATER LID	1	46	D0150C	UNIVERSAL SEAL KIT	1
16	SBI6611	CASTOR STEM	4	47	M10WSS	WASHER STAINLESS STEEL	4
17	SBI6639	MALE BANJO BOLT	1	48	SBI682	VAC MOTOR	1
18	SBI6392	SMALL VENT	1	49	D0065	MOTOR HOUSING	1
19	SBI6413	SPLASH PROOF COVER	2	50	D0150B	UNIVERSAL SEAL KIT	1
20	SBI6616	INTAKE	1	51	SBI6409	CABLE RESTRAINT	1
21	SBI6572	PANEL MOUNTING COUPLING	1	52	C1095	INPUT POWER CORD	1
22	D0164	STRENGTH DISK PLASTIC	1	53	M4X16PP	M4x16 POZIPAN SCREW	4
23	D0150A	MOTOR SEAL	1	54	M4X85PP	M4x85 POZIPAN SCREW	2
24	C1437	MOULDED ELBOW	1	55	D0122C	FOAM GASKET STRIP	2
25	SBI6576	1/4" TO 6mm HOSETAIL	1	56	SBI6679	PUMP - 50psi	1
26	SBI6615	M6X BLK NYLON PAN PHILIPS SCREW	8	57	SBI6655	PUMP TO SWITCH CABLE	3
27	D0122A	FOAM GASKET STRIP	1	58	C1835	PUMP CABLE WITH DIODE	1
28	D0122B	FOAM GASKET STRIP	1	59	SBI6669	VAC MOTOR LEAD	2
29	D0094G	HOSE	1	60	D0254	AIR FILTER	1
30	SBI3928	CONCLAMP	1	61	SBI6709	1.8" BSP HOSE TAIL	1
31	D0094F	HOSE	1				

WHEN ORDERING PLEASE QUOTE PART No. AND PART DESCRIPTION

CX10

ASSEMBLY

240V