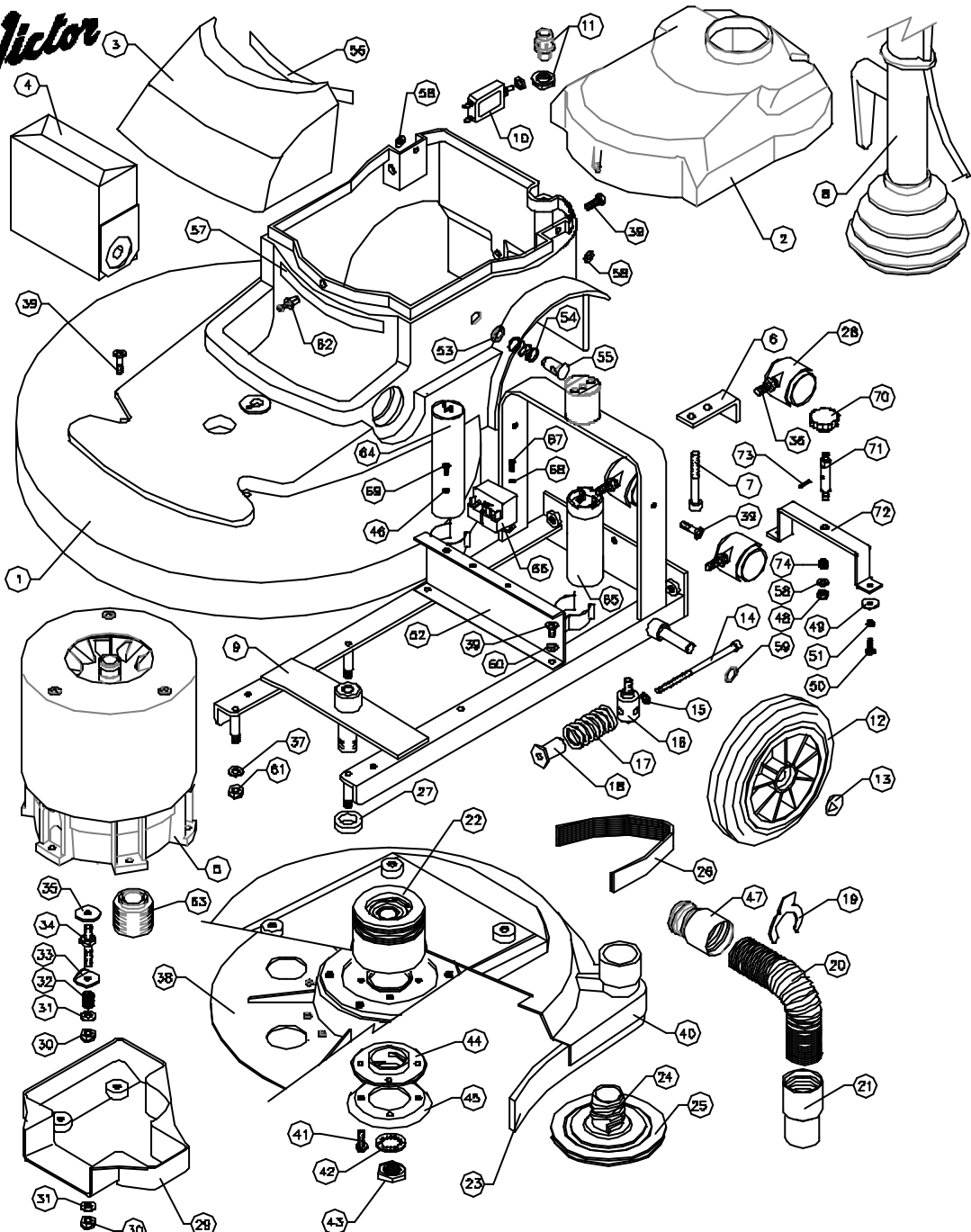


**Victor**



**DOWDING & PLUMMER Ltd.**  
 CALTHORPE HOUSE, STOCKFIELD ROAD,  
 BIRMINGHAM B27 6AP - ENGLAND  
 TEL: 0121-706-5771 FAX: 0121-708-1052



ITEM	PART No.	QTY.	DESCRIPTION	ITEM	PART No.	QTY.	DESCRIPTION
1	C1881/L/C	1	BODY Moulding	59	SB13886	2	WAVEY WASHER - PLW4
2	C1726	1	TOP MOTOR COVER	60	M6WSH	2	M6 SHAKEPROOF WASHER
3	C1397	1	FRONT DUST BAG COVER	61	M6NSB	4	M6 NUT - BINX
4	C1456	1	DUST BAG	62	SB16039	1	SCRIVET
5	ATM2185	1	MOTOR ASSEMBLY	63	A2142	1	MOTOR PULLEY #48 JB
6	C1801	1	BACK BRACKET	64	SB18056	1	30MFD RUN CAPACITOR
7	MBX705C	2	SOCKET SCREW MBx70mm	65	SB16226	1	125MFD START CAPACITOR
8	AYH1283	1	HANDLE ASSEMBLY	66	SB13958	1	2CR4-258 START RELAY
9	C1787	1	WELDED FRAME	67	MSX185P	2	M3X16 POZIPAN HEAD SCREW
10	SB13300	1	CIRCUIT BREAKER 12AMP.	68	M5WSP	2	M5 SPRING WASHER
11	SB15833	1	CABLE GLAND M16	69	MAX105PEI	1	M4X10 POZIPAN HEAD SCREW BRASS
12	SB18101/NT	2	WHEEL #200 REINFORCED-BLACK	70	SB16388	1	M6 HAND KNOB
13	SB13005/A	2	SPRING CAP 1/2"	71	D0223	1	SKIRT LIFTER BAR
14	MBX1259C	1	SOCKET CAP SCREW M6 x 125mm	72	D022D	1	SKIRT LIFTER BRACKET
15	11-4X3-4W	1	1/4" 1/D x 3/4" D/D WASHER	73	SB13450	1	3/32" x 3/4" SELOCK PIN
16	A2D64	1	MOTOR PILLAR STUD	74	SB16002	1	Ø 8.5 SPRING SS
17	A1860	1	SPRING Ø30 x 50				
18	A1865	1	SPRING RETAINER				
19	C1391	1	HOSE CLIP				
20	SB18136/F	1	STRETCH HOSE				
21	SB16668	1	HOSE END 32mm - BLACK				
22	AYPD306	1	Ø80mm x 75mm DRIVE PULLEY ASSY.				
23	C4004/C	1	DIFFUSER FLOOR SEAL				
24	BT163	1	PAD RETAINER				
25	A1842	1	POLYETHYLENE WASHER				
26	SB16639	1	DRIVE BELT 330 JB				
27	A2D62	1	PULLEY SPACER				
28	SB18529	3	Ø40 TWIN PLASTIC WHEEL CASTER				
29	C1398B	1	DRIVE BELT GUARD				
30	M6NSB	6	M6 NUT - BINX				
31	M6W	7	M6 PLAIN WASHER				
32	A2132	3	SPRING Ø14 x 15				
33	A2D68	3	FOLDED WASHER				
34	A2068	3	MOTOR STUD				
35	A1378	4	PLAIN WASHER Ø30xØ9x2.5				
36	SB16037	3	M6 x 15 CASTOR STEM				
37	M6W	4	M6 PLAIN WASHER				
38	AYD1018	1	17" DRIVE PLATE ASSY.				
39	MBX105P	7	M6 x 10 SCREW - POZIPAN				
40	C1886/L	1	SKIRT ASSEMBLY				
41	MBX20FPPT	4	M6 x 20 SCREW - TAPTITE				
42	M20WSP	1	M20 SPRING WASHER				
43	M20NH	1	M20 HALF NUT				
44	BT164	1	RETAINER NUT				
45	A1882	1	REINFORCING RING				
46	M4WB	1	M4 PLAIN WASHER BRASS				
47	BT367/BL	1	SWIVEL END INNER - BLACK				
48	M6NSB	1	M6 NUT - BINX				
49	M5W	2	M5 x 19 O/D PLAIN WASHER				
50	MSX105P	2	M5 x 10 SCREW - POZIPAN				
51	M5WSP	2	M5 SPRING WASHER				
52	C1703	1	CAPACITOR MOUNTING BRACKET				
53	A1044	1	FIXING WASHER - Ø10mm				
54	A1620	1	SPRING Ø17 x 25				
55	A1045	1	ANCHOR PIN (15mm) PLASTIC				
56	SB18328	1	HOOK STRIP				
57	SB16327	1	LOOP STRIP				
58	M6W	3	M6 x 14 O/D PLAIN WASHER				

WHEN ORDERING PLEASE QUOTE PART No. AND PART DESCRIPTION

VR-L17 LYNX 17 DRIVE ASSEMBLY 240V