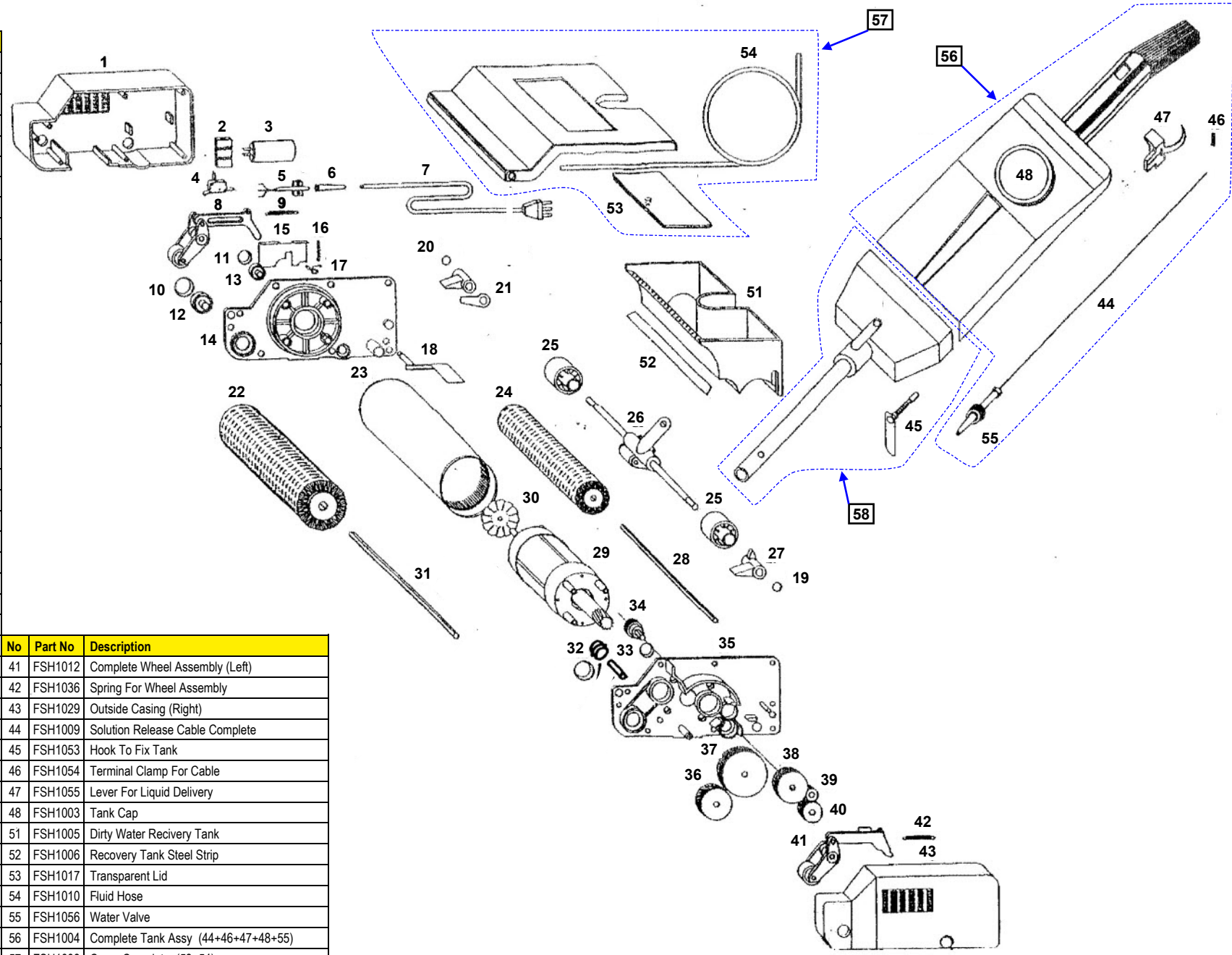


| No    | Part No | Description                              |
|-------|---------|--|
| 1     | FSH1002 | Outside Casing (Left)                    |
| 2     | FSH1021 | Nylon Terminal Board                     |
| 3     | FSH1023 | Condenser                                |
| 4     | FSH1024 | Micro-Switch                             |
| 5     | FSH1025 | Cable-Stop                               |
| 6     | FSH1026 | Cable Passing                            |
| 7     | FSH1027 | Electric Cable                           |
| 8     | FSH1011 | Complete Wheel Assembly (Right)          |
| 9     | FSH1028 | Spring For Wheel Assembly Coming Back    |
| 10    | FSH1030 | Packing For Bearing 6003                 |
| 11    | FSH1031 | Packing For Bearing 6001                 |
| 12    | FSH1032 | Brush-Holder Bearing 6003                |
| 13    | FSH1033 | Brush-Holder Bearing 6001                |
| 14    | FSH1034 | Side Casing (Right)                      |
| 14A   | FSH1014 | Side Casing (Right) Complete             |
| 15    | FSH1035 | Pedal Stop Plate                         |
| 16    | FSH1037 | Pedal Ring                               |
| 17    | FSH1038 | Lifter                                   |
| 18    | FSH1039 | Pedal With Pin                           |
| 19    | FSH1040 | Seeger Ring                              |
| 20    | FSH1041 | Spirol Pin                               |
| 21    | FSH1042 | Right Cam For Pedal Stop                 |
| 20/21 | FSH1043 | Spirol Pin With Right Cam For Pedal Stop |
| 22/24 | SBI7270 | White Front/Back Brush Set               |
| 22/24 | SBI7269 | Black Front/Back Brush Set               |
| 22/24 | SBI7276 | Brown Front/Back Brush Set               |
| 22/24 | SBI7268 | Green Front / Black Rear Brush Set       |
| 23    | FSH1020 | Convoyer Roller                          |



| No  | Part No | Description                                  |
|-----|---------|--|
| 25  | FSH1018 | Rear Wheel                                   |
| 26  | FSH1016 | Complete Axle                                |
| 27  | FSH1044 | Left Cam                                     |
| 28  | FSH1045 | Hexagonal Spindle 7 Mm Ø                     |
| 29  | FSH1001 | Complete Motor 240V                          |
| 30  | FSH1046 | Motor Fan                                    |
| 31  | FSH1047 | Hexagonal Spindle 10 Mm Ø                    |
| 32  | FSH1059 | Packing For Bearing 6003                     |
| 33  | FSH1060 | Packing For Bearing 6001                     |
| 34  | FSH1048 | Internal Gearwheel                           |
| 35  | FSH1013 | Side Casing (Left)                           |
| 35A | FSH1049 | Side Casing (Left) Complete With Spare Parts |
| 36  | FSH1050 | Cog With Bearing For Spindle (53 Mm Ø)       |
| 37  | FSH1051 | Cog With Bearing (78 Mm Ø)                   |
| 38  | FSH1015 | Cog With Bearing And Hexagonal Hole          |
| 39  | FSH1052 | Cog With Bearing (26 Mm Ø)                   |
| 40  | FSH1019 | Cog With Bearing For Spindle (33 Mm Ø)       |
| 41  | FSH1012 | Complete Wheel Assembly (Left)               |
| 42  | FSH1036 | Spring For Wheel Assembly                    |
| 43  | FSH1029 | Outside Casing (Right)                       |
| 44  | FSH1009 | Solution Release Cable Complete              |
| 45  | FSH1053 | Hook To Fix Tank                             |
| 46  | FSH1054 | Terminal Clamp For Cable                     |
| 47  | FSH1055 | Lever For Liquid Delivery                    |
| 48  | FSH1003 | Tank Cap                                     |
| 51  | FSH1005 | Dirty Water Recovery Tank                    |
| 52  | FSH1006 | Recovery Tank Steel Strip                    |
| 53  | FSH1017 | Transparent Lid                              |
| 54  | FSH1010 | Fluid Hose                                   |
| 55  | FSH1056 | Water Valve                                  |
| 56  | FSH1004 | Complete Tank Assy (44+46+47+48+55)          |
| 57  | FSH1008 | Cover Complete (53+54)                       |
| 58  | FSH1007 | Handle Tube and Cover Assy (45+50)           |



V-H9816

HYPERGLIDE 300 (May 2009)

Dowding & Plummer Ltd  
 Calthorpe House, Stockfield Road  
 Birmingham  
 B27 6AP

Tel: 0121 706 5771  
 Email: info@victorfloorcare.com  
 Web: www.victorfloorcare.com