

# SDR-80 RIDE ON

## 80l Compact Ride On Scrubber Dryer



The SDR-80 features the performance and manoeuvrability of a walk behind scrubber dryer, but with the added productivity of a ride-on scrubber dryer.

The front mounted brush head increases visibility in operation allowing the operator to see their working area, in addition to being able to get the brushes closer to corners and edges.

The patented two toothed brushes has simplified the transmission to a single motor, thus increasing productivity and reducing costs.

The SDR-80 has been designed to be simple to maintain. Routine maintenance tasks such as squeegee replacement, cleaning the clean-water filter and replacing brushes is fast and easy. The wide opening of the recovery tank makes with easy to access and clean.

The slimline design of the SDR-80 makes it very easy to manoeuvre, even if the operator is more accustomed to a walk behind machine.

- ✓ **High performance cleaning**  
High rotation double brush cleans better than single brush machines
- ✓ **Compact design**  
With the same tank capacity, Victor scrubber dryers are some of the shortest, narrowest and lightest options available.
- ✓ **Simple, but built to last**  
Easy access to routine maintenance parts
- ✓ **Easy to Use**  
Simple controls mean less training is required
- ✓ **Quick Charge & Long Runtime**
- ✓ **Maintenance packages available on request**

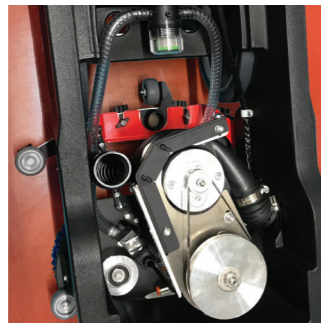


Code	Description
V-SDR-80	80l Ride On Scrubber Dryer

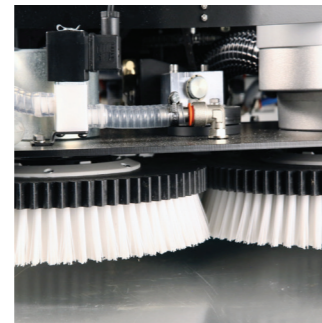
### Key features



**Front-mounted Double Brush**  
Patented 2 brush design are powered by a single motor, for superior cleaning power.



**Extra Quiet**  
The dual brush and suction turbine are powered by a single motor creating just 69 decibels in use.



**Heavy Duty Brush**  
Equipped with a heavy duty brush head (up to 41kg) with adjustable working pressure.



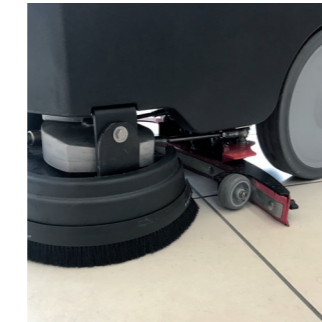
**Super Slimline**  
Designed to be as ultra slimline, allowing it to be lighter and more manoeuvrable.



**Quick Charge Batteries**  
The SDR-80 has a runtime of 4hrs and can be fully recharged in just 12hrs.



**Simple Maintenance**  
Routine maintenance and cleaning tasks such have been designed to be fast and simple.



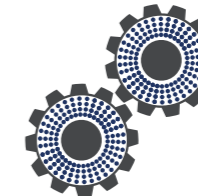
**Squeegee in front of wheels**  
Drying the floor before it comes in contact with the wheels reduces the risk of skidding and impacts.



**Power steering**  
Advanced power steering ensures ultimate manoeuvrability and driving comfort for the operator.

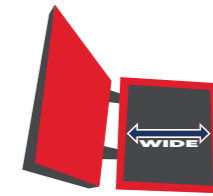
### Technical Specifications

	V-SDR-80
Solution Tank (l)	80
Recovery Tank (l)	80
Cleaning Track (mm)	650
Theoretical Yield (m <sup>2</sup> per hr)	3900
Installed Power (W)	1350
Power supply (V)	24
Protection Degree	IPX3
Autonomy (Hr)	4
Energy Consumption (W per m <sup>2</sup> )	0.35
Dimensions (L x W x H) with mounted squeegee	1320 x 730 x 1225
Weight Without Batteries (kg)	125
Weight With Batteries (kg)	210
Reverse Corridor (m)	1.8
Noise Level (dB)	69
<b>BRUSH ASSEMBLY</b>	
Brushes	2 x ø13" - 330mm
Brush Motor Rated Power (W)	550
Rated / Vacuum Brush Rotation Speed (RPM)	225 - 187
Load on brushes adjustable (kg)	0-41
<b>SUCTION</b>	
Silenced turbine rated power (W)	500
Vacuum (0mm orifice)	1526 mm H2O
<b>TRANSMISSION</b>	
Motor differential power with electric brake (W)	300
Working Speed (km/h)	0-4
Transfer Speed (km/h)	0-6
Max. Slope exceedable (work / ramp)	7% - 16%
<b>WASHING HEAD LIFTING</b>	
Gear motor power (W)	30
<b>BATTERIES</b>	
Battery compartment size x2 (mm)	375 x 375 x 315
Standard Batteries x 2	Gel 12V 105/140Ah (C5/C20)
Recommended battery unit size (mm)	345 x 170 x 285
Recommended battery unit weight (kg)	42.7



### Twin Toothed Brush Design

The use of double toothed brushes increases efficiency, whilst utilising just one motor. This increases the energy efficiency, increasing runtime.



### Reduced Maintenance

All routine maintenance tasks such as cleaning and replacing the squeegee, cleaning the tank and replacing brushes are easy to access and effortless.



### High Brush Head Pressure

The SDR-80 can be used for maintenance or deep cleaning. The SDR-80 comes equipped with an electric load adjustment which ranges from 0kg - 41kg

### Consumables

Code	Name
SBI0170	Front V squeegee blade
SBI0180	Rear V squeegee blade
SBI0010	White toothed brush 13" 0.9mm
SBI0020	Blue toothed brush 13" 0.7mm
SBI0110	Blue toothed brush 13" 0.3mm
SBI0031	Tynex toothed brush 13" 0.6mm grit 320

### Optional Accessories on Request

Code	Name
B.001.0	Battery Gel 12V 105/140Ah / C5/C20 (2 units per machine)
B.012.0	Battery AGM Discover 12V 105/130Ah / C5/C20
X.024.0	Battery Charger 24V / 13A (suitable for all Gel/AGM/Acid batteries - includes removable power cord and SBI20 connector) *

\* Cord/plug for different countries available on request with no extra-charge

Need some help? Call us today: +44 (0)121 706 5771

Need some help? Call us today: +44 (0)121 706 5771